

# Valves series A1

## 1/2", 3/2, electrically operated



### Standard executions

Version	Symbol	Code	Item
3/2 NC		034113	A1E430
3/2 NO		034122	A1E431
3/2 solenoid/solenoid		034123	A1E432
3/2 NC external air pilot		034137	A1K430
3/2 solenoid/solenoid external air pilot		034158	A1K432



Series of spool valves, with static seals, high flow, for panel mounting.

Coils and connectors have to be ordered separately.

For the coils type ASA12.../ASA2...

see page 2.200.1

For the connectors type A122...

see page 2.210.20



**II 2Gc IIB T5**  
**II 2Dc T100°C**

On request, they can be supplied according to 2014/34/EU - **ATEX**

### Code key

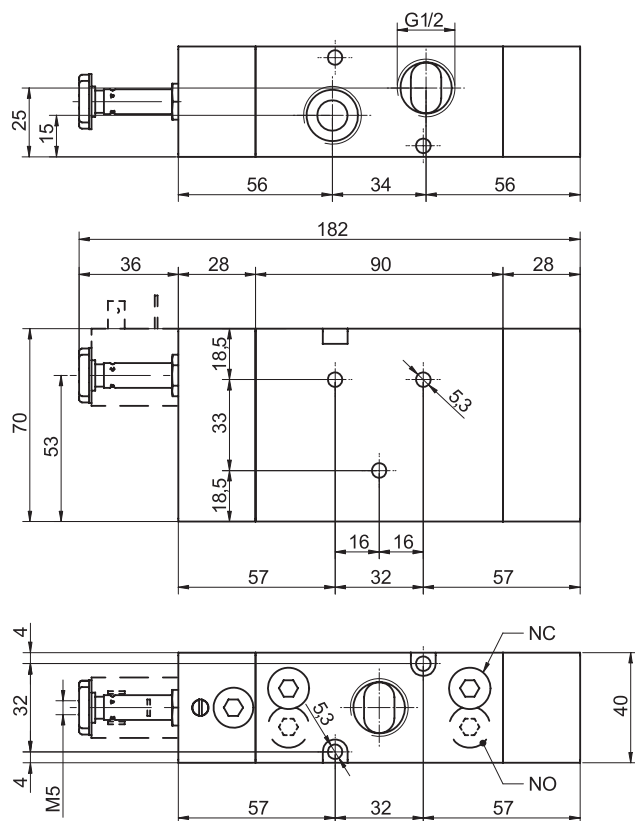
Series	Actuation	Size	Function
A1	E = electrical K = electrical with external air pilot	4 = 1/2"	30 = 3/2 NC 31 = 3/2 NO 32 = 3/2 solenoid/solenoid

### Technical data

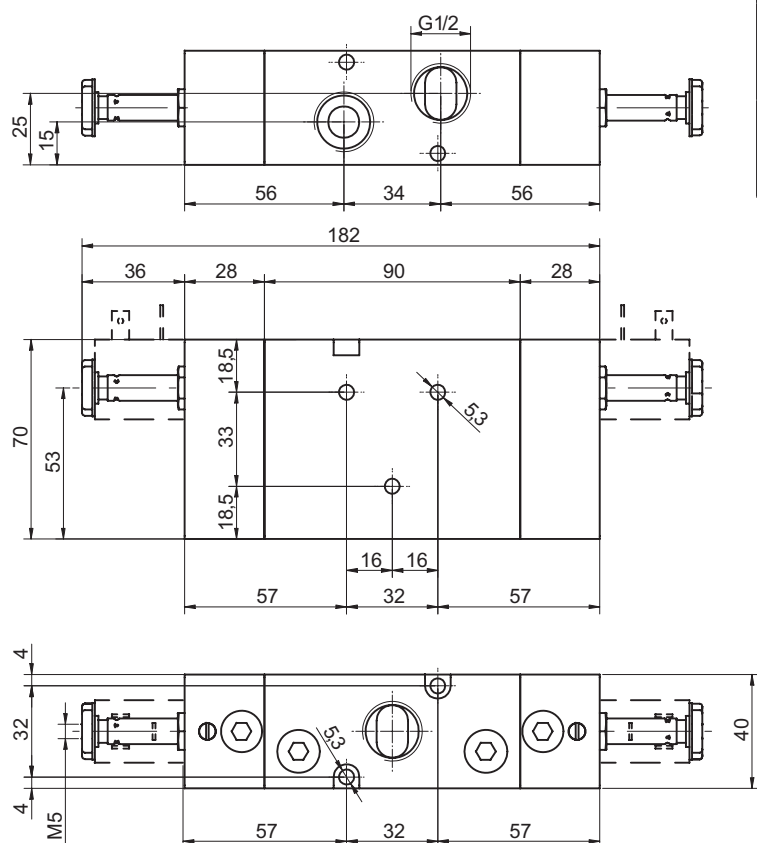
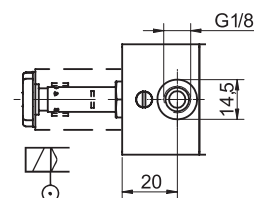
Fluid	Compressed filtered air with or without lubrication. Lubrication, if started, must be continued.		
Pressure range	0 ÷ 10 bar		
Temperature range	-10°C ÷ +60°C		
Orifice	15 mm		
Flow	2900 NI/min at 6 bar with ΔP 1 bar		
Minimum piloting pressure	Spring return: 2,5 bar	Bistable: 1 bar	3 positions: 2,5 bar
Mounting	In any position		
Manual override	Bistable on solenoid pilot - Spring return on valve body		
Response time (at 6 bar)	solenoid/spring		solenoid/solenoid
	Energising: 60 ms	De-energising: 36 ms	Energising: 30 ms De-energising: 30 ms
Materials	Body: Anodised aluminium Covers: Anodised aluminium Spool: Hard aluminium anodized Distancers: Aluminium Seals: Hydrogenated Nitrile Butadiene Rubber (HNBR)		

# Valves series A1

1/2", 3/2, electrically operated



Version	Symbol	Code	Item
3/2 NC		034113	A1E430
3/2 NO		034122	A1E431
3/2 NC external air pilot		034137	A1K430



Version	Symbol	Code	Item
3/2 solenoid/solenoid		034123	A1E432
3/2 solenoid/solenoid external air pilot		034158	A1K432

